



frequency control solutions

T58

TIGHT TEMPERATURE STABILITY

texo



Product Description

Greenray Industries' T58 Series TCXO has been developed as a reference oscillator for timing applications requiring low g-Sensitivity performance and tight temperature stability

Features

- Temperature Stability down to ± 100 ppb
- Frequency Range: 10 to 52MHz
- Low acceleration sensitivity as low as 0.5 ppb/g
- Excellent long-term aging < 4 ppm over 10 years
- Rugged 5.0 x 3.2mm package
- Low g-Sensitivity and Tight Stability in a compact, SMT package

Applications

- Telecommunications
- High-shock electronics
- Mobile radio
- Mobile instrumentation
- Airborne communications
- Wireless communications
- Microwave receivers
- Telecom Stratum 3
- Smart munitions

Other specification options are available, please use the contact the factory for more information regarding your specific requirements.

REV:E



Greenray Industries, Inc., 840 West Church Road, Mechanicsburg, PA 17055
TEL: 717-766-0223 FAX: 717-790-9509 e-mail: sales@greenrayindustries.com
www.greenrayindustries.com

Greenray Proprietary Greenray Industries, Inc. disclaims all liability arising from this information and its use. No licenses are conveyed, implicitly or otherwise, to any Greenray intellectual property rights. ©2024 Greenray Industries, Inc. All rights reserved. Reproduction in whole or in part is prohibited.



frequency control solutions

T58 SERIES
10 MHz to 52 MHz



Electrical Characteristics

Electrical Characteristics						
Parameter	Conditions	Min	Typical	Max	Units	Ordering Code
Nominal Frequency	+25°C	10		52	MHz	
Frequency Stability	-40°C to +85°C		±0.3	±0.5	ppm	T57
	-20°C to +70°C		±0.1	±0.3	ppm	N37
Aging	1 ST years			± 1.0	ppm	
	10 years			± 4.0	ppm	
Acceleration Sensitivity	Worst axis tested @ 90 Hz, 10 g			2.0	ppb/g	SG
				0.7	ppb/g	LG
Frequency vs Reflow	After 24 hrs. recovery			1.0	ppm	
Voltage Control	VC=0 to Supply, Positive Slope		± 8.0		ppm	
Phase Noise Performance						
Parameter	Frequency Offset (Hz)	Min	Typical	Max	Units	Ordering Code
Static @ 20 MHz Nom. Freq.	10		-95		dBc/Hz	
	100		-118		dBc/Hz	
	1 k		-142		dBc/Hz	
	10 k		-156		dBc/Hz	
	100 k		-157		dBc/Hz	
	Floor			-160		dBc/Hz
DC Supply						
Parameter	Conditions	Min	Typical	Max	Units	Ordering Code
Supply Voltage		3.0	3.3	3.6	Vdc	3.3
Supply Current	CMOS			6	mA	
	Clipped Sinewave			3	mA	
RF Output						
Parameter	Conditions	Min	Typical	Max	Units	Ordering Code
CMOS						C
Load			15		pF	
Levels	Supply Voltage=3.3V	+ 2.8 "1" Level		+ 0.2 "0" Level	V	
Symmetry		40	50	60	%	
Clipped Sine						CS
Load			10 pF// 10 kΩ			
Level		+ 0.8			V p-p	



Greenray Industries, Inc., 840 West Church Road, Mechanicsburg, PA 17055
TEL: 717-766-0223 FAX: 717-790-9509 e-mail: sales@greenrayindustries.com
www.greenrayindustries.com

Greenray Proprietary Greenray Industries, Inc. disclaims all liability arising from this information and its use. No licenses are conveyed, implicitly or otherwise, to any Greenray intellectual property rights. ©2024 Greenray Industries, Inc. All rights reserved. Reproduction in whole or in part is prohibited.



frequency control solutions

T58 SERIES
10 MHz to 52 MHz



Environmental and Mechanical Specifications

Screenings			
Test	Standard	Method, Condition	Description
Vibration	MIL-STD-202G	204, D	20 g, 20 Hz to 2000 Hz, swept sine
Shock	MIL-STD-202G	213	Customer Requirements

Recommendations and General Information

Information	
Parameter	Notes
Operating Temperature	-40°C to +105°C
Storage Temperature	-60°C to +105°C
Terminal Finish	ENIG STD., SnPb 63/37 (non-RoHS) available
Package Weight	<0.1 gram
Soldering Instruction	Reflow
Shipping	Tray Pack, Tape & Reel
Marking	None

Ordering Example

T58	-	N	-	16	-	C	-	3.3	-	SD	-	20 MHz	-	E
Model		Temperature Range		Stability		Output		Supply Voltage		G-Sensitivity		Freq. (MHz)		Term. Finish
		N: -20°C to +70°C T: -40°C to +85°C J: -40°C to +105°C		17: ±0.1ppm 27: ±0.2ppm 57: ±0.5ppm 16: ±1.0ppm		CS: Clipped Sine C: CMOS		3.3: 3.3V		SG: < 2 ppb/g LG: < 0.7 ppb/g		10 MHz to 52 MHz		E: Au PB: SnPb, <97% Sn

The Order ID (T58-N16-C-3.3-SD-20MHz-E) is only used to issue the preliminary quote. The Part Number (T58-X) for the quoted Electrical Characteristics, Screenings, and other options, will be provided with the Greenray Sales Order.



Greenray Industries, Inc., 840 West Church Road, Mechanicsburg, PA 17055
TEL: 717-766-0223 FAX: 717-790-9509 e-mail: sales@greenrayindustries.com
www.greenrayindustries.com

Greenray Proprietary Greenray Industries, Inc. disclaims all liability arising from this information and its use. No licenses are conveyed, implicitly or otherwise, to any Greenray intellectual property rights. ©2024 Greenray Industries, Inc. All rights reserved. Reproduction in whole or in part is prohibited.

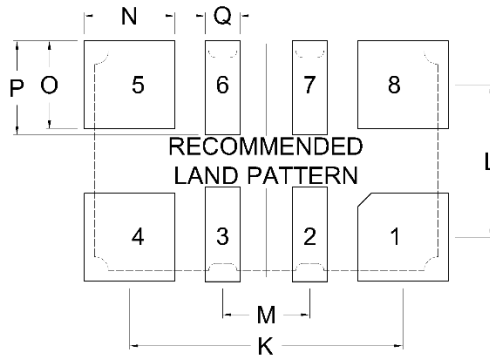
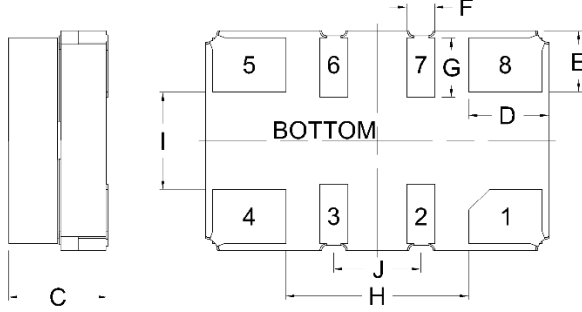
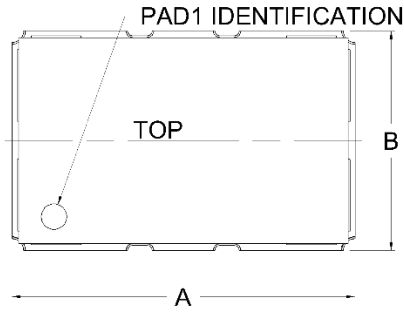


frequency control solutions

T58 SERIES
10 MHz to 52 MHz



Package Information



Part Dimensions				
DIM	Typical		MAX	
	Inches	MM	Inches	MM
A	0.197	5.00	0.207	5.25
B	0.126	3.20	0.136	3.45
C	NA	NA	0.079	2.00
D	0.046	1.17	NA	NA
E	0.035	0.89	NA	NA
F	0.016	0.41	NA	NA
G	0.038	0.97	NA	NA
H	0.105	2.67	0.115	2.92
I	0.056	1.42	0.066	1.68
J	0.050	1.27	0.060	1.52

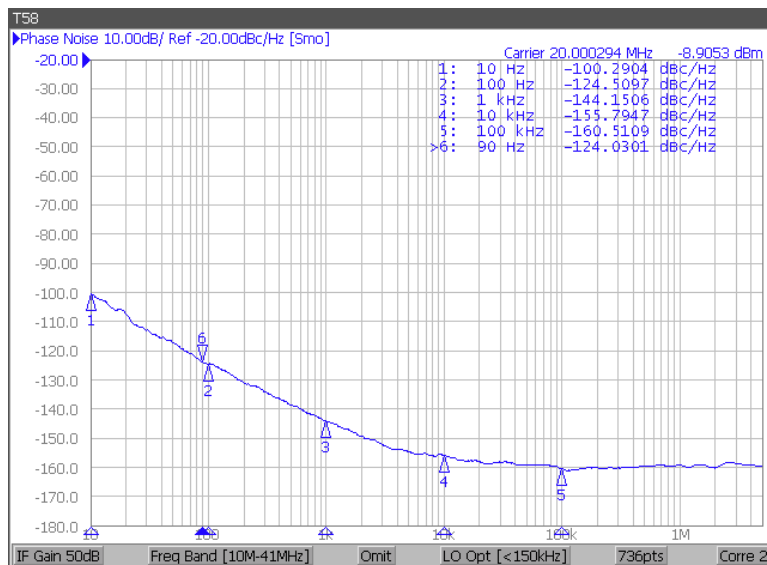
PAD CONNECTIONS	
1	CONTROL VOLTAGE
2	NO CONNECT
3	NO CONNECT
4	GND
5	OUTPUT
6	TRISTATE OR NC (SEE TABLE 1)
7	NO CONNECT
8	SUPPLY VOLTAGE

(NC Pads may have internal connections and should be isolated)

TABLE 1: TRI-STATE FUNCTION	
PAD 6	ENABLE/DISABLE FUNCTION
HIGH (SUPPLY)	OUTPUT ENABLED
OPEN (NC)	OUTPUT ENABLED
LOW (GND)	HIGH IMPEDANCE DISABLED

Land Pattern Dimensions				
DIM	Typical		MAX	
	Inches	MM	Inches	MM
K	0.147	3.73	0.157	3.99
L	0.126	3.20	0.136	3.45
M	0.047	1.19	NA	NA
N	0.049	1.25	NA	NA
O	0.47	1.19	NA	NA
P	0.051	1.30	NA	NA
Q	0.019	0.48	NA	NA

Typical Phase Noise



Greenray Industries, Inc., 840 West Church Road, Mechanicsburg, PA 17055
TEL: 717-766-0223 FAX: 717-790-9509 e-mail: sales@greenrayindustries.com
www.greenrayindustries.com

Greenray Proprietary Greenray Industries, Inc. disclaims all liability arising from this information and its use. No licenses are conveyed, implicitly or otherwise, to any Greenray intellectual property rights. ©2024 Greenray Industries, Inc. All rights reserved. Reproduction in whole or in part is prohibited.

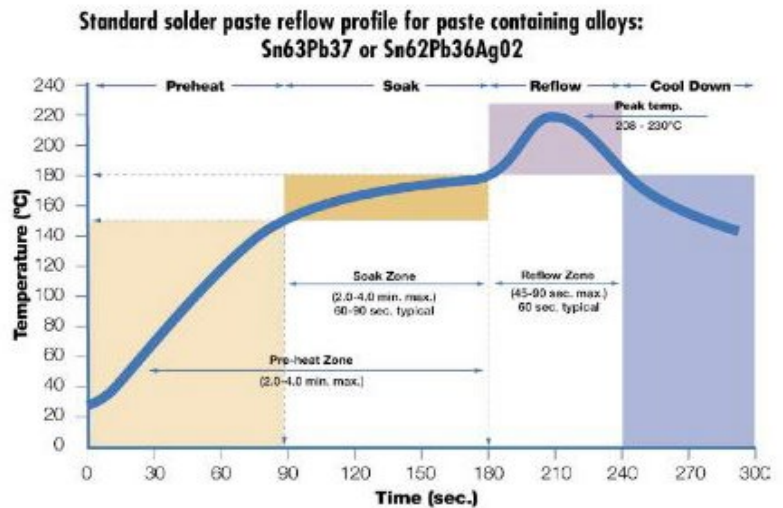
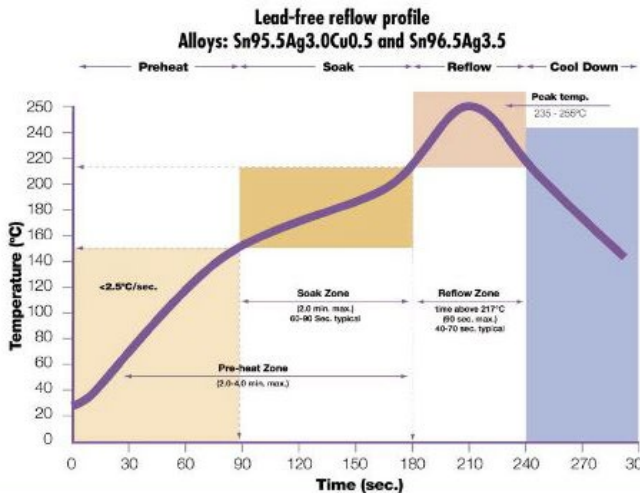


frequency control solutions

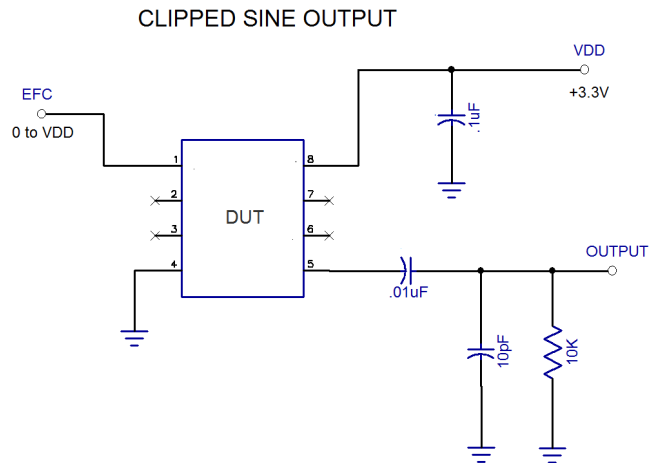
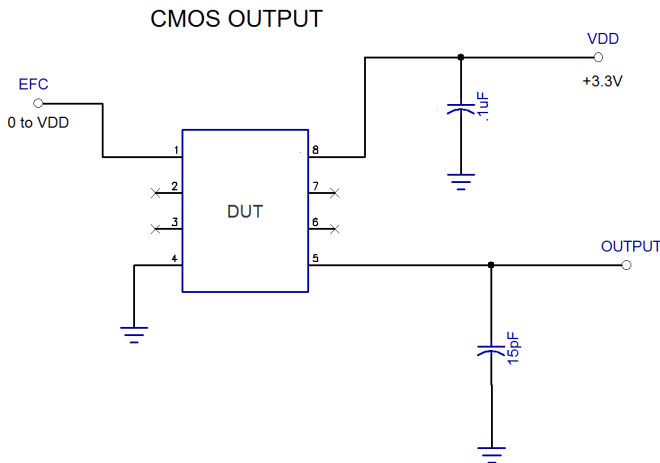
T58 SERIES
10 MHz to 52 MHz



Recommended Solder Reflow Profiles



Recommended Configuration



Greenray Industries, Inc., 840 West Church Road, Mechanicsburg, PA 17055
TEL: 717-766-0223 FAX: 717-790-9509 e-mail: sales@greenrayindustries.com
www.greenrayindustries.com

Greenray Proprietary Greenray Industries, Inc. disclaims all liability arising from this information and its use. No licenses are conveyed, implicitly or otherwise, to any Greenray intellectual property rights. ©2024 Greenray Industries, Inc. All rights reserved. Reproduction in whole or in part is prohibited.