



T52 Series TCXO

10 MHz to 52 MHz
(Rev. C)

GREENRAY INDUSTRIES, INC.

PRECISION QUARTZ TECHNOLOGY

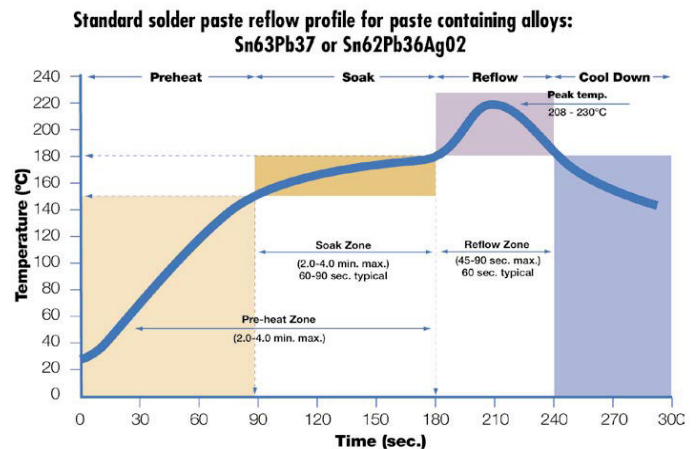
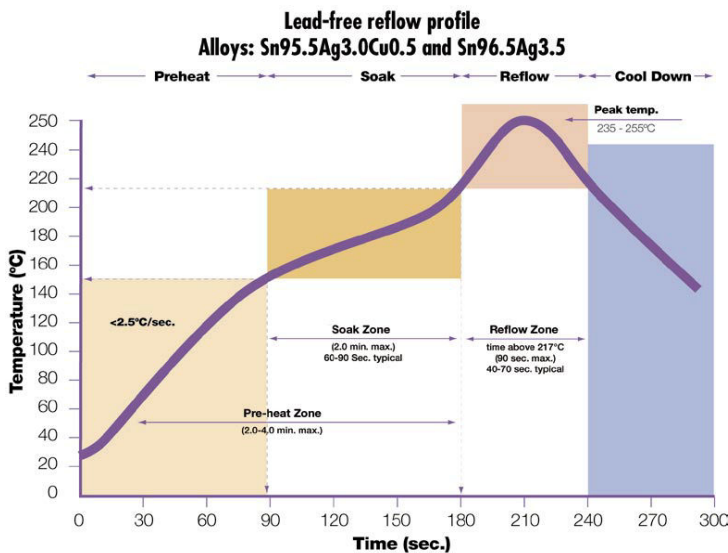
SPECIFICATIONS

Very Rugged TCXO
Tight Temp Stability

Frequency	10.0 MHz to 52.0 MHz		
Output	CMOS (C option) or Clipped Sinewave (S option)		
Symmetry	50% ± 10% (CMOS)		
Output Level	SINE - +0.8V p-p min into 10pF/10k ohm load; CMOS - 3.3V - +0.2V max to +2.8V min; 5.0V - +0.2V max to +4.2V min; 15pF load		
Temp Stability	Temp Range	Tolerance	Option
(other stabilities available)	-20°C to +70°C	±0.1 ppM	N17
	-40°C to +85°C	±0.2 ppM	T27
	-40°C to +85°C	±0.5 ppM	T57
	-40°C to +85°C	±1.0 ppM	T16
Aging	<1.0 ppM/yr typ		
Freq vs Reflow	<1ppM after 24hr recovery		
Freq Adjust	±8 ppM typ via 0 to V _{cc} control V, positive slope; or available with no adjust		
Supply Voltage	+3.0 VDC ± 5%, +3.3VDC, or +5.0 VDC		
Supply Current	< 6mA for HCMOS; < 3mA for SINE		
G-Sensitivity	≤2x10 ⁻⁹ /g typ (Standard "SD"); ≤7x10 ⁻¹⁰ /g (Low G-Sense "LG")		
Environmentals			
Vibration –	per MIL-STD-202G, Meth 214, Cond I-F		
Shock -	per MIL-STD-202G, Meth 213, Cond D		

Ordering Example:

T52-N17-C-3.3-LG-20.0MHz
(Model-Stability-Output-SupplyV-GSense-Freq)



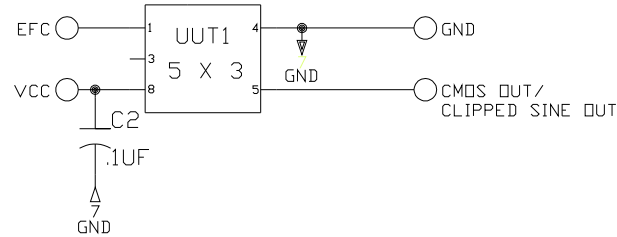
840 W. Church Rd., Mechanicsburg, PA 17055

Tel: 717-766-0223 Fax: 717-790-9509

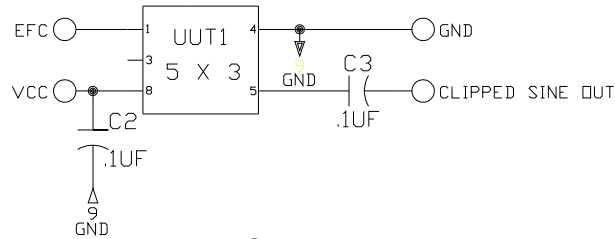
www.greenrayindustries.com email: sales@greenrayindustries.com

Recommended Output Configuration

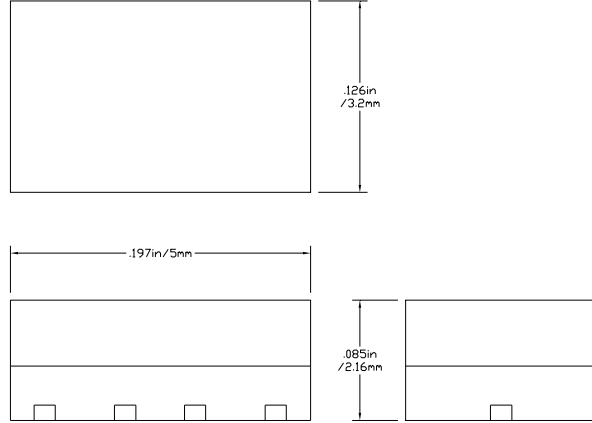
CMOS/
CLIPPED SINE <DC COUPLED>



CLIPPED SINE <AC COUPLED>



Outline Drawing



Pad Connections

- 1 - EFC
- 2 - N/C, Internal Use Only
- 3 - N/C, Internal Use Only
- 4 - 0V, Ground
- 5 - Output
- 6 - Tri-State (enable Hi or float)
- 7 - N/C, Internal Use Only
- 8 - Supply Voltage

Pad Layout

